

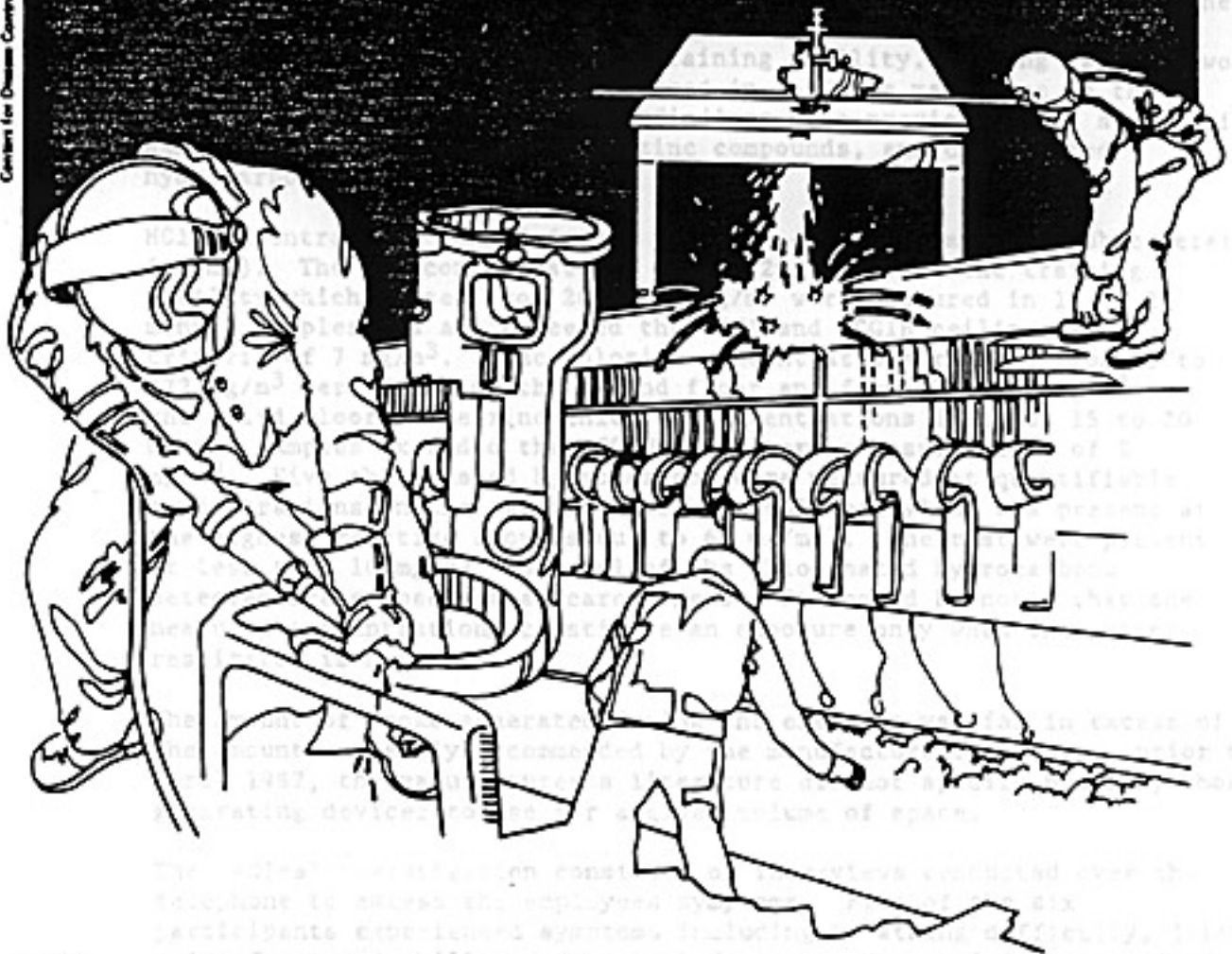
HETA 87-109-1950  
MARCH 1989

3347389

NIOSH INVESTIGATOR  
John H. Zey, MS, CIH

U.S. DEPARTMENT OF HEALTH AND HUMAN SERVICES • Public Health Service  
Centers for Disease Control • National Institute for Occupational Safety and Health

# NIOSH



## Health Hazard Evaluation Report

HETA 87-109-1950  
NORTH RIVERSIDE FIRE DEPARTMENT  
NORTH RIVERSIDE, ILLINOIS

REPRODUCED BY  
U.S. DEPARTMENT OF COMMERCE  
NATIONAL TECHNICAL INFORMATION SERVICE  
SPRINGFIELD, VA. 22161

## I. Summary

In January 1987 the National Institute for Occupational Safety and Health (NIOSH) received a request from the International Association of Fire Fighters (IAFF) to evaluate the toxicity of smoke clouds produced by a zinc chloride ( $ZnCl_2$ ) smoke generating device (5D smoke bomb) used for smoke training drills at the North Riverside Fire Department, North Riverside, Illinois. During the second of two exercises in October, 1986, fire fighters reportedly experienced adverse health effects including fever, chills and soreness of joints.

On February 17, 1987 NIOSH investigators conducted an assessment of the smoke cloud components generated by the 5D smoke bomb at the North Riverside Fire Department's fire training facility. During each of two tests, three 5D smoke bombs were used in the same manner as in the October 1986 exercise. Based on findings of a previous NIOSH study, air samples were collected for HCl, zinc compounds, and chlorinated hydrocarbons.

HCl concentrations ranged from a trace to 44 milligrams per cubic meter ( $mg/m^3$ ). The HCl concentrations on the 2nd floor of the training facility which ranged from 20 to 44  $mg/m^3$  were measured in 15 to 20 minute samples and all exceeded the OSHA and ACGIH ceiling level criteria of 7  $mg/m^3$ . Zinc chloride concentrations ranging from 63 to 172  $mg/m^3$  were found on the second floor and from 21 to 42  $mg/m^3$  on the third floor. The zinc chloride concentrations in these 15 to 20 minute samples exceeded the ACGIH short-term exposure limit of 2  $mg/m^3$ . Five chlorinated hydrocarbons were measured at quantifiable concentrations on the second floor. Perchloroethylene was present at the highest relative amounts (up to 62  $mg/m^3$ ). The rest were present at less than 10  $mg/m^3$ . Several of the chlorinated hydrocarbons detected are suspect human carcinogens. It should be noted that the measured concentrations constitute an exposure only when the proper respirator is not worn.

The amount of smoke generated during the exercise was far in excess of the amount currently recommended by the manufacturer. However, prior to April 1987, the manufacturer's literature did not specify how many smoke generating devices to use for a given volume of space.

The medical investigation consisted of interviews conducted over the telephone to assess the employees symptoms. Five of the six participants experienced symptoms including breathing difficulty, joint pain, fever and chills, and general fatigue. One training participant continued to be bothered by joint pain and exertional shortness of breath (in excess of that perceived as normal) for two weeks following the exercise. All of those interviewed were asymptomatic at the time of the interviews. These fire fighters were either not wearing a respirator or had removed it as part of the drill.

HETA 87-109-1950  
MARCH 1989  
NORTH RIVERSIDE FIRE DEPARTMENT  
NORTH RIVERSIDE, ILLINOIS

NIOSH INVESTIGATORS:  
John N. Zey, MS, CIH  
Fred Richardson, M.D.

## I. Summary

In January 1987 the National Institute for Occupational Safety and Health (NIOSH) received a request from the International Association of Fire Fighters (IAFF) to evaluate the toxicity of smoke clouds produced by a zinc chloride ( $ZnCl_2$ ) smoke generating device (5D smoke bomb) used for smoke training drills at the North Riverside Fire Department, North Riverside, Illinois. During the second of two exercises in October, 1986, fire fighters reportedly experienced adverse health effects including fever, chills and soreness of joints.

On February 17, 1987 NIOSH investigators conducted an assessment of the smoke cloud components generated by the 5D smoke bomb at the North Riverside Fire Department's fire training facility. During each of two tests, three 5D smoke bombs were used in the same manner as in the October 1986 exercise. Based on findings of a previous NIOSH study, air samples were collected for HCl, zinc compounds, and chlorinated hydrocarbons.

HCl concentrations ranged from a trace to 44 milligrams per cubic meter ( $mg/m^3$ ). The HCl concentrations on the 2nd floor of the training facility which ranged from 20 to 44  $mg/m^3$  were measured in 15 to 20 minute samples and all exceeded the OSHA and ACGIH ceiling level criteria of 7  $mg/m^3$ . Zinc chloride concentrations ranging from 63 to 172  $mg/m^3$  were found on the second floor and from 21 to 42  $mg/m^3$  on the third floor. The zinc chloride concentrations in these 15 to 20 minute samples exceeded the ACGIH short-term exposure limit of 2  $mg/m^3$ . Five chlorinated hydrocarbons were measured at quantifiable concentrations on the second floor. Perchloroethylene was present at the highest relative amounts (up to 62  $mg/m^3$ ). The rest were present at less than 10  $mg/m^3$ . Several of the chlorinated hydrocarbons detected are suspect human carcinogens. It should be noted that the measured concentrations constitute an exposure only when the proper respirator is not worn.

The amount of smoke generated during the exercise was far in excess of the amount currently recommended by the manufacturer. However, prior to April 1987, the manufacturer's literature did not specify how many smoke generating devices to use for a given volume of space.

The medical investigation consisted of interviews conducted over the telephone to assess the employees symptoms. Five of the six participants experienced symptoms including breathing difficulty, joint pain, fever and chills, and general fatigue. One training participant continued to be bothered by joint pain and exertional shortness of breath (in excess of that perceived as normal) for two weeks following the exercise. All of those interviewed were asymptomatic at the time of the interviews. These fire fighters were either not wearing a respirator or had removed it as part of the drill.

Dense clouds generated by Zn Cl<sub>2</sub> smoke generating devices should be considered hazardous. While a properly operating SCBA worn by a well-trained individual offers adequate protection against the smoke, even short-term exposure to the dense smoke without respiratory protection presents a health hazard. Recommendations for precautionary measures to minimize potential inhalation health hazards are presented in Section VIII.

Keywords: SIC 9224 (Fire Protection), smoke-generating devices, smoke bomb, zinc-chloride, hydrochloric acid, chlorinated hydrocarbons.

## II. INTRODUCTION

On January 9, 1987, the National Institute for Occupational Safety and Health (NIOSH) received a request from the International Association of Fire Fighters (IAFF) to assess the toxicity of smoke clouds produced by a smoke generating device (5D smoke bomb). The requestor stated that during an October 1986 smoke training exercise at the North Riverside Fire Department's Fire Training facility, North Riverside, Illinois, fire fighters experienced adverse health effects when using these devices. The components of smoke clouds produced by Zn Cl<sub>2</sub> type smoke bomb devices have been found to include hydrochloric acid (HCl), zinc compounds, and a number of chlorinated hydrocarbons.<sup>1</sup>

NIOSH investigators visited the North Riverside Fire Department on February 17, 1987 to assess the smoke cloud components. Concurrently, a NIOSH physician interviewed the participants of the October, 1986 training exercise by telephone.

Preliminary results of the investigation, and recommendations, were distributed by letter in April 1987.

## III. Background

Superior Signal Company has sold zinc-based smoke generating devices for approximately 30 years. The 5D smoke bomb is one of several devices the company currently sells. These devices differ primarily in their size and amount of smoke produced. These devices have commonly been used to generate smoke for fire training, disaster drills, and air flow studies. Until about the early 1980s, advertising literature stated that these devices were medically proven to be non-toxic. However, zinc chloride smoke generating devices have been implicated in a number of smoke training accidents.<sup>2-11</sup>

The North Riverside Fire Department has 15 full-time fire fighters and 13 additional fire fighters on call. The fire department's fire training facility is located in one corner of the fire house (Figures 1-2) which was built in the late 1970s. The training facility has three floors and a basement. Each of the three upper floors has a landing with an adjacent stairway, a window, and at least one door. Fire drills have been conducted in the facility approximately four times per year since it was built. The total estimated volume of this training facility is 6700 cubic feet.

During October 1986, two drills were conducted using 5D smoke bombs to simulate a smoke-filled burning building. The October 1986 drills represented the first use of the 5D smoke bombs at this location. Materials previously used to create smoke included straw, wood, and on one occasion a smoke device of unknown identity which had been obtained from the National Guard.

During the second October drill, six fire fighters were involved in a high rope rescue training exercise. Those affected by the smoke were not wearing a respirator or took it off to participate in the drill (e.g. yelling for help).

#### IV. METHODS

##### A. Environmental

NIOSH investigators evaluated two separate training exercises on February 17, 1987. North Riverside fire training personnel were asked to position three 5D smoke bombs (the number used during the October drills) in the same locations used in the October 1986 drill. One bomb was placed on each of the 1st, 2nd and 3rd floors (Figure 2). For each training exercise, air samples were collected for chlorinated hydrocarbons, HCl, and metals, including zinc. These chemicals were determined to be the primary smoke cloud components in a previous NIOSH investigation.<sup>1</sup> Area air samples were collected on the 2nd floor, where the highest exposures were anticipated, on the 3rd floor where one employee had been standing during the previous drill, on the roof, and at an outside location. Additional air samples were collected in the basement of the adjacent living space for the second test because smoke had infiltrated into the fire truck bay and adjacent living spaces during the first test.

Battery-operated pumps, with the appropriate sampling media attached via flexible tubing were suspended at breathing height (5 1/2 ft.) at the inside sampling locations. All sampling pumps were started when the smoke devices were ignited. After 15 minutes, all pumps were turned off. A 15-minute sampling period was chosen after consideration of the burn time of the smoke device (5-minutes), analytical limits of detection and sampling pump flow rates. More details on the sampling and analytical techniques are presented in Table 1.

##### B. Medical

All six firefighters who participated in the October 1986 high rope rescue training exercise were interviewed by telephone.

#### V. Evaluation Criteria

##### A. Environmental Exposure Criteria

As a guide to the evaluation of the hazards posed by workplace exposures, NIOSH field staff usually employ environmental evaluation criteria for assessment of a number of chemical and physical agents.

Some of these criteria are intended to suggest levels of exposure to which most workers may be exposed up to 10 hours per day, 40 hours per week for a working lifetime without experiencing adverse health effects. Since fire training exercises are of short duration these long-term exposure are not as relevant. They are presented in this report as points of reference. Short-term criteria, [15 minute short-term exposure criteria, ceiling level criteria and concentrations that are considered to be immediately dangerous to life or health (IDLH)], are more relevant for evaluating the acute health effects of exposures to these smoke clouds.

When exposure occurs to a mixture of substances it is usual practice to consider the effects of those that elicit similar responses to be at least additive. That is, if one is exposed to  $5 \text{ mg/m}^3$  of chemical A and  $5 \text{ mg/m}^3$  of chemical B, and both are respiratory irritants, then from the standpoint of potential health effects, the exposure, in a general sense, is often thought of as an exposure to  $10 \text{ mg/m}^3$  of a respiratory irritant. There can also be a synergistic effect. That is, the overall effect is greater than each singular effect or, in some cases, an additive effect.

The primary sources of environmental evaluation criteria for the workplace are: 1) NIOSH Criteria Documents and recommendations, 2) the American Conference of Governmental Industrial Hygienists' (ACGIH) Threshold Limit Values (TLVs), and 3) the U.S. Department of Labor (OSHA) occupational health standards.<sup>12-16</sup> Often, the NIOSH recommendations and ACGIH TLVs are lower than the corresponding OSHA standards. Both NIOSH recommendations and ACGIH TLVs usually are based on more recent information than are the OSHA standards. The OSHA standards also may be required to take into account the feasibility of controlling exposures in various industries where the agents are used; the NIOSH-recommended exposure limits, by contrast, are based primarily on concerns relating to the prevention of occupational disease.

#### B. Toxicity of Chemicals Detected in the Smoke Clouds

Inhalation is the most significant route of exposure to the smoke constituents. The primary smoke cloud components are zinc chloride, hydrochloric acid, and a mixture of chlorinated hydrocarbons.

The primary effects of acute exposure to aerosolized HCL are due to its corrosive properties. Exposure to HCL has been shown to be associated with pulmonary, laryngeal, oral, nasal and conjunctival irritation; the magnitude of effect is in proportion to the dose.<sup>17,18</sup> The irritant effect of the vapors on the respiratory tract may produce bronchitis, pulmonary edema, and death. The OSHA standard and ACGIH TLV for HCL is  $7 \text{ mg/m}^3$  as a ceiling value not to be exceeded. The concentration of HCL listed in the NIOSH Pocket Guide to be immediately dangerous to life and health (IDLH) is  $140 \text{ mg/m}^3$ .<sup>19</sup>

Zinc chloride, which reacts with water to produce HCl, is an irritant to eyes, mucous membranes, and skin. Inhalation exposure may precipitate a cough (with or without sputum production), stridor, a sensation of chest tightness, dyspnea, pulmonary edema, cyanosis, and in case of very high exposure, death.<sup>17-20</sup> The OSHA standard for zinc chloride is  $1 \text{ mg/m}^3$  (8 hour TWA). The ACGIH TLV is  $2 \text{ mg/m}^3$  as a short-term exposure level (STEL) for a 15-minute period. The concentration listed in the NIOSH Pocket Guide to be IDLH is  $2000 \text{ mg/m}^3$ .<sup>19</sup>

The chlorinated hydrocarbons detected in this evaluation may be responsible for numerous symptoms. Table 2 presents the health effects of overexposure. Several of the chlorinated hydrocarbons detected are suspect human carcinogens; however, the potential acute respiratory effects from exposure to the zinc compounds and HCl are of more immediate concern considering how these devices are used during training exercises. The carcinogen issue is complex, especially when the exposure is to a mixture of compounds.<sup>21-26</sup>

## VI. RESULTS AND DISCUSSION

### A. Environmental

Figure 3 presents the results of a qualitative analysis of a bulk air sample collected during the NIOSH tests. Over 10 chlorinated hydrocarbons were qualitatively identified, including perchloroethylene, carbon tetrachloride, trichloroethylene, hexachloroethane, hexachlorobutadiene, and several chlorobenzenes.

Table 3 presents the air concentrations of the smoke cloud components measured in both tests. Air concentrations for HCl ranged from 20 to  $44 \text{ mg/m}^3$  on the second floor and from 1.9 to  $6.9 \text{ mg/m}^3$  on the third floor. All values measured on the second floor are above the OSHA AND ACGIH ceiling value of  $7 \text{ mg/m}^3$  for HCl.

Zinc was measured in the range of 30 to  $82 \text{ mg/m}^3$  on the second floor and from 10 to  $20 \text{ mg/m}^3$  on the third floor. Corresponding values for zinc chloride, assuming the zinc was present as zinc chloride, are 63 to  $172 \text{ mg/m}^3$  and 21 to  $42 \text{ mg/m}^3$ , respectively. Thus, the current ACGIH STEL ( $2 \text{ mg/m}^3$ ) was exceeded by up to 86 times.

Five chlorinated hydrocarbons (see Table 3) were detected at quantifiable concentrations on the second floor and three of the five were detected on the third floor. Perchloroethylene was measured at the highest relative amounts (up to 62 ppm). The presence of suspect human carcinogens in the smoke clouds constitute a potential long term risk to someone exposed while not wearing a respirator, however, the potential acute health effects from exposure to the zinc compounds and the HCl are of more immediate concern considering how these devices are used.

During the first NIOSH test, smoke infiltrated the fire truck bay and the lower floor of the living spaces. Fire Department personnel reported that smoke was visibly heavy during the first part of the test. Heavy smoke was observed in the truck bay by the NIOSH survey team during the second test. Samples that were collected in the billiards room on the lower floor for the second test detected trace amounts of HCl and zinc.

There were no written standard operating procedures (SOP) for the fire training exercises. Such documents are one method to insure consistency and quality control of training activities.

A limitation of this study is the lack of instantaneous, or "grab" samples. Since the 5D smoke bombs have a burn time of about 5 minutes and were ignited at the start of the sampling period, one can assume that air concentrations were highest during the first five minutes of the 15-minute sampling time. The smoke cloud was visibly most dense during the early stages of sampling. Airborne contaminant levels are governed by the number and type of smoke devices used, the volume of the training facility, and the air leakage out of the facility during the test. Use of the same number and type of device under different training conditions could result in lower or higher exposures. A previous NIOSH investigation of an airport disaster drill documented minimal exposures to training participants when one 5D smoke bomb was used outdoors.<sup>21</sup>

Manufacturer's literature, at the time the field data was collected, did not specify what type, or how many, zinc chloride smoke generating devices should be used in a given size area. One of the most important criteria, from the standpoint of the fire training officials, was that vision be effectively obscured. Updated manufacturer's information, available in 1987, does include this information, and, by the 1987 usage criteria, far more smoke was generated than recommended. Additionally, the smoke generating devices are often obtained without the material safety data (MSDS) and other supplemental manufacturers' information.

This study did not evaluate alternative smoke generating methods. The atmosphere produced by another common method of generating fire training smoke, actual burning of combustible materials, although not studied by NIOSH, should also be considered hazardous and warrants the use of an SCBA.

#### B. Medical

Six fire-fighting personnel were involved in the training exercise in October, 1986. Medical information concerning these individuals was obtained in February 1987 by telephone interview. Five of the six participants reported development of symptoms either immediately post-exercise or within a few hours of exercise. These fire fighters were either not wearing a respirator or had removed it as part of the drill.

Symptoms reported included:

1. Sore throats (3 persons).
2. Difficulty breathing (2).
3. Joint (upper and lower extremities) stiffness and pain (2).
4. Chills and fever (2).
5. Headaches (1).
6. Generalized fatigue (1).

One training participant, who reported being exposed to dense smoke, continued to be bothered by joint pain and exertional shortness of breath (in excess of that perceived as normal) for two weeks following the exercise. This was the only individual who received a medical evaluation at the time of the event; no exposure-specific biological monitoring tests were performed at that time. All of those interviewed were asymptomatic at the time of the medical interviews.

**VII. CONCLUSIONS**

Based on the data collected, dense clouds produced from Zn Cl<sub>2</sub> smoke generating devices should be considered hazardous. Chemicals measured in the 5D smoke bomb clouds are consistent with the results of a previous NIOSH investigation of smoke bomb type devices<sup>1</sup> and symptoms reported by the North Riverside fire fighters are consistent with those reported in previous episodes (Table 4).<sup>2-11</sup>

A well trained individual wearing a properly operating SCBA will be adequately protected while in the atmospheres generated by the devices evaluated as part of this study; however, even a short-term unprotected exposure to the components of a dense smoke cloud could result in serious health effects.

**VIII. RECOMMENDATIONS**

1. No smoke generating device should be considered "absolutely safe" or "non-toxic". Additionally, product literature should be obtained and manufacturer's guidelines followed when using any smoke generating device.
2. If zinc chloride smoke generating devices are used to generate dense clouds, the smoke should be considered hazardous and participants who enter the smoke should wear a self contained breathing apparatus (SCBA). Practices like "buddy breathing" should not be conducted in these dense smoke clouds.
3. Anyone who enters any type of smoke cloud should be instructed to leave the area immediately if they notice any problem (such as a leak in the SCBA). If such individuals experience any breathing difficulties, they should receive medical evaluation as soon as possible.

4. Standard operating procedures should be implemented for training to test new devices and for actions to take should anyone experience problems during a training exercise.
5. While an SCBA, worn by a trained individual will eliminate the inhalation hazard associated with the zinc chloride smoke generating devices, thought should be given to what the real goals of fire training exercises are and what atmospheric characteristics are required to fulfill those goals. For example, is it necessary to generate a dense smoke to obscure vision, or can the face shield of the SCBA be darkened to simulate smoky conditions? Once goals are delineated, a decision can be made as to whether the use of the zinc chloride devices are indicated or whether alternative methods should be evaluated. Whatever method is chosen should be based on the risks and benefits associated with each.
6. Warning labels on individual smoke generating devices should be modified to include information on the principal smoke cloud components.

#### IX. REFERENCES

1. Zey J.N., Richardson F. Health hazard evaluation no. 85-274-1879. Cincinnati, Ohio: National Institute for Occupational Safety and Health.
2. Granols J. Firefighters disclose April mishap. Columbia, Missouri: Missouriian Newspaper. Page 1, June 3, 1981.
3. Graf D. Letter to the National Fire Protection Association. September 21, 1983.
4. Johnson F, Stonehill R. Chemical pneumonitis from inhalation of zinc chloride. Diseases of the Chest, 40:619-624. 1961 (Dec.).
5. Knaan G, Mulho M, Tirosh M, Lichtig H, Puznner Y. Pulmonary involvement following exposures to zinc chloride smoke. Harefuah 79(11):489-92. 1970.
6. Department of the Navy. Report of fatality following inhalation of zinc chloride smoke. Department of the Navy, Commander Training Command, U.S. Atlantic Fleet, Norfolk, Virginia. Letter of April 28, 1981.
7. Macauley M. Smoke bomb poisoning. J Royal Army Medical Corp. Vol 110:27-32. 1964.
8. Evans EH. Casualties following exposure to zinc chloride smoke. Lancet, Vol 249, pgs 368-370. 1945.

9. Milliken JA, Wash D, Kadish ME. Acute interstitial pulmonary fibrosis caused by a smoke bomb. Canadian Medical Association Journal. 88:36-39. 1963.
10. Schenker MD, Speizer FE, Taylor JO. Acute upper respiratory symptoms resulting from exposure to zinc chloride aerosol. Environmental Research. 25:317-324. 1981.
11. Schmahl K. Clinical signs of ZnCl<sub>2</sub> smoke intoxication. Pneumonologic Vol 150:161-169. 1974.
12. National Institute for Occupational Safety and Health. NIOSH/OSHA occupational health guidelines for chemical hazards. Cincinnati, Ohio: National Institute for Occupational Safety and Health, 1981. (DHHS (NIOSH) publication no. 81-123).
13. Centers for Disease Control. Morbidity and mortality weekly report - NIOSH Recommendations for occupational safety and health standards. Vol 35, No. 15. September 1986. Centers for Disease Control. Atlanta, Georgia.
14. Occupational Safety and Health Administration. OSHA safety and health standards. 29 CFR 1910.1000. Occupational Safety and Health Administration, revised 1983.
15. American Conference of Governmental Industrial Hygienists. Threshold limit values for chemical substances and physical agents in the workroom environment and biological exposure indices with intended changes for 1986-87. Cincinnati, Ohio: ACGIH, 1986.
16. American Conference of Governmental Industrial Hygienists. Documentation of the threshold limit values. 5th ed. Cincinnati, Ohio: ACGIH, 1986.
17. Proctor, NH, Hughes, JP, Chemical Hazards of the Workplace, 1978, J.B. Lippincott.
18. Parmeggiani, L (et al, eds), Encyclopedia of Occupational Health and Safety, 1983, ILO.
19. National Institute for Occupational Safety and Health. NIOSH/OSHA pocket guide to chemical hazards. Cincinnati, Ohio: National Institute for Occupational Safety and Health, 1985. DHHS publication no. (NIOSH) 85-114).
20. Last, J (et al, eds), Public Health and Preventive Medicine, 12th edition, 1986, Appleton-Century-Crofts.
21. Zey J.N. Health hazard evaluation no. 86-326-1692. Cincinnati, Ohio: National Institute for Occupational Safety and Health. 1987.

22. National Institute for Occupational Safety and Health. Criteria for a recommended standard: occupational exposure to tetrachloroethylene (perchloroethylene). Cincinnati, Ohio: National Institute for Occupational Safety and Health, 1977. (DHEW publication no. (NIOSH) 77-121).
23. National Institute for Occupational Safety and Health. Current intelligence bulletin 20--tetrachloroethylene (perchloroethylene). Cincinnati, Ohio: National Institute for Occupational Safety and Health, 1978. (DHHS (NIOSH) publication no. 78-112).
24. National Institute for Occupational Safety and Health. Criteria for a recommended standard: occupational exposure to trichloroethylene. Cincinnati, Ohio: National Institute for Occupational Safety and Health, 1973. (DHEW publication no. (NIOSH) 73-11025).
25. National Institute for Occupational Safety and Health. Criteria for a recommended standard: occupational exposure to carbon tetrachloride. Cincinnati, Ohio: National Institute for Occupational Safety and Health, 1976. (DHEW) publication no. (NIOSH) 76-133).
26. Clayton G., Clayton F. Patty's industrial hygiene and toxicology, Vol 2B, Toxicology, 3rd revised ed. New York, New York: John Wiley and Sons, Inc. 1981.

X. AUTHORSHIP AND ACKNOWLEDGEMENTS

Project Conducted and  
Report Prepared by:

John N. Zey, M.S., C.I.H.  
Industrial Hygienist  
Industrial Hygiene Section

Fred Richardson, M.D.  
Medical Officer  
Medical Section

Environmental Evaluation  
Assistance:

Greg Burr, M.S., C.I.H.  
Industrial Hygienist  
Industrial Hygiene Section

Laboratory Evaluation:

Mark Millson  
Ardith Grote  
Karen Williams  
Marilyn Hawkins  
Chemists, MRSB  
Division of Physical Sciences  
and Engineering

James Johnston  
Chemist, UBTL  
Salt Lake City, Utah

Report Typed By:

Linda Morris  
Clerk Typist  
Industrial Hygiene Section

Originating Office:

Hazard Evaluations and Technical  
Assistance Branch  
Division of Surveillance, Hazard  
Evaluations, and Field Studies

#### XI. DISTRIBUTION AND AVAILABILITY OF REPORT

Copies of this report are temporarily available upon request from NIOSH, Hazard Evaluations and Technical Assistance Branch, 4676 Columbia Parkway, Cincinnati, Ohio 45226. After 90 days, the report will be available through the National Technical Information Service (NTIS), 5285 Port Royal, Springfield, Virginia 22161. Information regarding its availability through NTIS can be obtained from NIOSH Publications Office at the Cincinnati address. Copies of this report have been sent to:

1. North Riverside Fire Department  
International Association of Fire Fighters (IAFF),  
Local #2714, North Riverside, Illinois
2. IAFF, Washington, D.C.
3. Superior Signal Company

For the purpose of informing affected employees, copies of this report shall be posted by the employer in a prominent place accessible to the employees for a period of 30 calendar days.

Sampling and Analytical Techniques  
 North Riverside Fire Department  
 North Riverside Illinois  
 HETA 87-109  
 February 17, 1987

Material Evaluated	Media	Flow Rate (LPH)	Analytical Techniques
Hydrochloric Acid	QR80-53 tubes	0.5	Samples were analyzed for hydrochloric acid by ion chromatography according to NIOSH Method 7903. The A and B sections of the silica gel tubes and the fiber end plugs were each separately desorbed in 10 ml of eluant and heated in a boiling water bath for 10 minutes. The resulting solutions were filtered through 0.45 micron filter, and an aliquot of each solution was analyzed via a Dionex 2010 ion chromatograph utilizing a NISP 7108 auto sampler.
Chlorinated Hydrocarbons qualitative and quantitative samples	Charcoal Tubes	0.2 and 0.5	Qualitative samples were desorbed with 1 ml of CS <sub>2</sub> and screened by gas chromatography (FID) The sample with the higher concentrations was further analyzed by GC/MSD to identify components. Quantitative samples were desorbed as above and then analyzed using a GC-FID
Metals	Mixed Cellulose Ester Membrane Filter	2.5	Samples were digested with nitric and perchloric acids. The residues were dissolved in a dilute solution of the same acids and the resulting sample solutions were analyzed for trace metal content using Inductively Coupled Plasma-Atomic Emission Spectroscopy (ICP-AES).
Zinc Compound Identification	Mixed cellulose Ester Filter	2.5	Analysis via Transmission Electron Microscopy via Zumeide-Dement procedure outlined in NIOSH publication no. 77-204. Each preparation was examined 230x and 18,000x magnification. Elemental spectra were obtained during the analysis.

Table 2

Health Effects of Identified Smoke Cloud Components  
North Riverside Fire Department - Fire Training Facility  
North Riverside Illinois

HEIA 87-109  
February 17, 1987

Chemical	IDLH	Medical Outcome	Reference
Zinc Chloride Fume (ZnCl <sub>2</sub> )	2000 mg/m <sup>3</sup>	fever, cyanosis, tachypnea, burning skin and eyes, conjunctivitis, irritation of nose and throat, cough, copious sputum, chest pain, pneumonia, pulmonary fibrosis	12, 16, 19
Hydrochloric Acid (HCl)	100 ppm (140 mg/m <sup>3</sup> )	burning eyes and skin, dermatitis, inflammation and ulceration of nose, and throat, cough, choking	12, 16, 19
Tetrachloroethylene (Perchloroethylene) (CCl <sub>2</sub> =CCl <sub>2</sub> )	500 ppm	irritation of eyes, nose, throat, nausea, flushing of face and neck, vertigo, dizziness, incoordination, headache, somnolence, erythema, liver damages, cancer	12, 13, 16, 19, 22, 23
Hexachloroethane (CCl <sub>3</sub> -CCl <sub>3</sub> )	300 ppm	eye irritation and cancer	12, 13, 16, 19
Trichloroethylene (CHCl=CCl <sub>2</sub> )	1000 ppm	headache, vertigo, visual disturbances, tremors, somnolence, nausea, vomiting, irritation of eyes, dermatitis, cardiac arrhythmias, cancer	12, 13, 16, 19, 24, 26
Carbon Tetrachloride (CCl <sub>4</sub> )	300 ppm	skin irritation, central nervous system, depression, nausea, vomiting, liver and kidney damage, liver cancer	13, 16, 19, 25, 26
Hexachlorobutadiene (CCl <sub>2</sub> =CCl-CCl=CCl <sub>2</sub> )		eye and nose irritation, kidney tumors	16, 26

IDLH = Concentration of subject chemical reported to be immediately dangerous to life and/or health of individual exposed without adequate protective equipment. IDLH values are listed in the NIOSH Pocket Guide (Reference 19).

**Table 3**  
**Results of Environmental Sampling in Smoke Clouds from 50 Smoke Bombs**  
 North Riverside Fire Department  
 North Riverside, Illinois

HETA 87-109  
 February 17, 1987

Sample Location	No. of Samples	Test	Range of Concentrations for Chemicals Measured in Smoke Cloud (mg/m <sup>3</sup> )									
			HCl	Perchloro-ethylene	CCl <sub>4</sub> <sup>a</sup>	hexachloro-butadiene	hexachloro-ethane	Trichloro-ethylene	Zn	ZnCl <sub>2</sub> <sup>a*</sup>	Lead	
Second Floor	2	T1	20-28	46-47	3.1-3.2	(0.5)	9.6-9.7	(1.2-1.3)	55-82	116-172	0.1-0.13	
		T2	24-44	54-62	5.6-6.4	(0.7-0.8)	16-18	1.5-1.7	20-38	63-80	0.05-0.07	
Third floor, near window	2	T1	1.9-4.3	3.6-4.1	(ND-0.5)	ND	(1.2-1.3)	ND	10-11	21-23	ND	
		T2	6.4-6.9	5.5-6.3	(0.4-0.5)	ND	(1.4-1.6)	ND	19-20	40-42	ND	
Basement, billiards room	1	T2	(0.4)	(0.49)	ND	ND	ND	ND	2	4.2	ND	
		T1	(0.3)	ND	ND	ND	ND	ND	0.31	0.65	ND	
Roof, outside	1	T2	(0.5)	ND	ND	ND	ND	ND	0.39	0.82	ND	
		T1	ND	-	-	-	-	-	ND	ND	ND	
Ground level, outside	1	T1	ND	-	-	-	-	-	ND	ND	ND	
		T2	ND	-	-	-	-	-	ND	ND	ND	

One sample from each test, evaluated to determine the zinc compounds present, measured 75-80% ZnCl<sub>2</sub> and 15-20% ZnO.  
 Sample times were ranged from 15-20 minutes for all samples. Chemical was present in the air sample at a level below the Laboratory Limit of detection, but below the laboratory limit of quantitation, the numbers listed are estimates.

ACGIH = 7-C  
 NIOSH = None  
 OSHA = 7-C

1340-STEL  
 MREL  
 2010-C

125-STEL  
 12.6-C  
 150-C

0.24-T  
 None  
 None

100-T  
 LFL  
 10-T

None  
 None  
 None

2-STEL  
 None  
 1-T

2-STEL  
 None  
 1-T

0.15-T  
 0.10-T  
 0.05-T

T = Time-weighted Average  
 STEL = Short-term exposure limit  
 C = Ceiling value not to be exceeded  
 MREL = Minimal workplace exposure level  
 LFL = Lowest feasible level  
 ND = None detected  
 \* = Chemical considered to be a carcinogen by NIOSH, and/or OSHA and/or ACGIH  
 \*\* = Values for zinc chloride are calculated by multiplying the total zinc measured by a factor of 2.1. This assumes all zinc measured is zinc chloride.

Table 4

Partial Listing Of Reported Episodes  
Involving Smoke Bomb (ZnCl<sub>2</sub>) Devices

Reference/ Date/ Location	Event	Summary of Reported Health Effect
Ref-8 Feb 83 Malta	Zinc chloride smoke device devices caught fire and filled tunnel with estimated volume of 100,000 ft <sup>3</sup> of smoke. Two of 10 deaths occurred as late as the 14th day after the accident. Six weeks after the accident, two people were still adversely affected.	10 deaths; dyspnea, chest tight; episternal and epigastric pain, red & tearing eyes, cough with copious expectoration; blood stained sputum, nausea & vomiting, cyanosis, headache, high fever. Two autopsies showed red & oedematous lungs & mucous membranes; ulceration at the bifurcation of the trachea. Liver, kidney & cerebral congestion.
Ref-4 1959; Texas	In three separate incidents, 17-19 year old airmen were accidentally overexposed to smoke during routine survival training.	Burning throat, paroxysmal coughing, nausea & retching during first 48 hours, dyspnea, fever & malaise. Fever up to 105 F, development of tachypnea and cyanosis. Xray showed infiltrate in both lungs. Symptoms negative after 2-4 month.
Ref-9 Pre-1963 Ontario, Canada	35 year old fireman participated in a fire exercise. Smoke generator placed at the bottom of a depression - buildings on three sides. Patient tried to extinguish bomb. A colleague withdrew almost immediately.	Both subjects reported nausea, sore throat, and chest tightness. Primary subject had a fever, Xray showed diffuse infiltrates 30 hours after exposure, cyanosis, and confusion. Died on the 18th day.
Ref-7 Pre-1964 England?	19 year old was exposed to smoke during a civil defense training exercise, exposure time estimated to be 4 minutes.	Immediate complaints were retrosternal pain, abdominal cramps, anxiety, cyanosis, and high fever. X-ray showed lung edema, necrosis, hemorrhage and an infarct of the upper left lung.

Table 4  
(continued)  
Partial Listing Of Reported Episodes  
Involving Smoke Bomb (ZnCl<sub>2</sub>) Devices

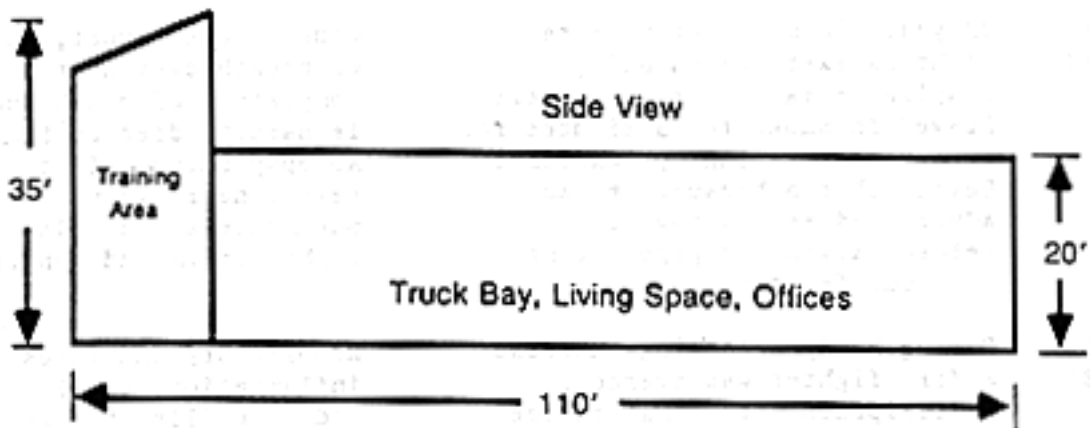
Reference/ Date/ Location	Event	Summary of Reported Health Effect
Ref-6 Mar 81	22 year old male during fire fighting exercise on ship, respirator facepiece come apart. Stayed in smoke for 5 minutes for "fear" of "messing up" exercise. Device chosen because it was advertised as non-toxic. Welded galvanized pipe during previous few days.	Cough, sore throat, shortness of breath over next 4 days complained of cough and was lethargic, died on 5th day. Autopsy showed bilateral severe necrotizing pneumonitis and dilatation of right atrium and ventricle.
Ref-2 Apr 81 Mo	During buddy breathing exercise a fire fighter was overcome. Participants noted that device were marketed as "medically proven safe and non-toxic". Bombs had been used for years.	Respiratory and intestinal inflammation, swollen lymph nodes, chills, headache, nausea, fatigue and sore throat.
Ref-10	82 "victims" and 28 medical personal were exposed to smoke during an airport disaster drill	Immediate cough, hoarse, sore throat, later symptoms were nausea, fatigue and headache.
Ref-3 Jun 83 ND	Fire chief developed problem with smoke pac during a "buddy breathing" exercise in a garage. Bombs warned of irritation. Chief inhaled a "breath" of smoke. NFPA in letter recommended not using toxic smoke.	Difficult breathing, chest pains, hot and and cold flashes, and nervousness. At hospital emergency room. temperature = 101 F , oxygen administered followed by recovery within 24 hours
Oct 86 IL	5 of 6 fire fighters were affected while conducting smoke training	Symptoms included headache, chills and fever, breathing difficulty, joint pain and sore throats

\*Smoke device or exposure are as described in the article or abstract for the reported episode.

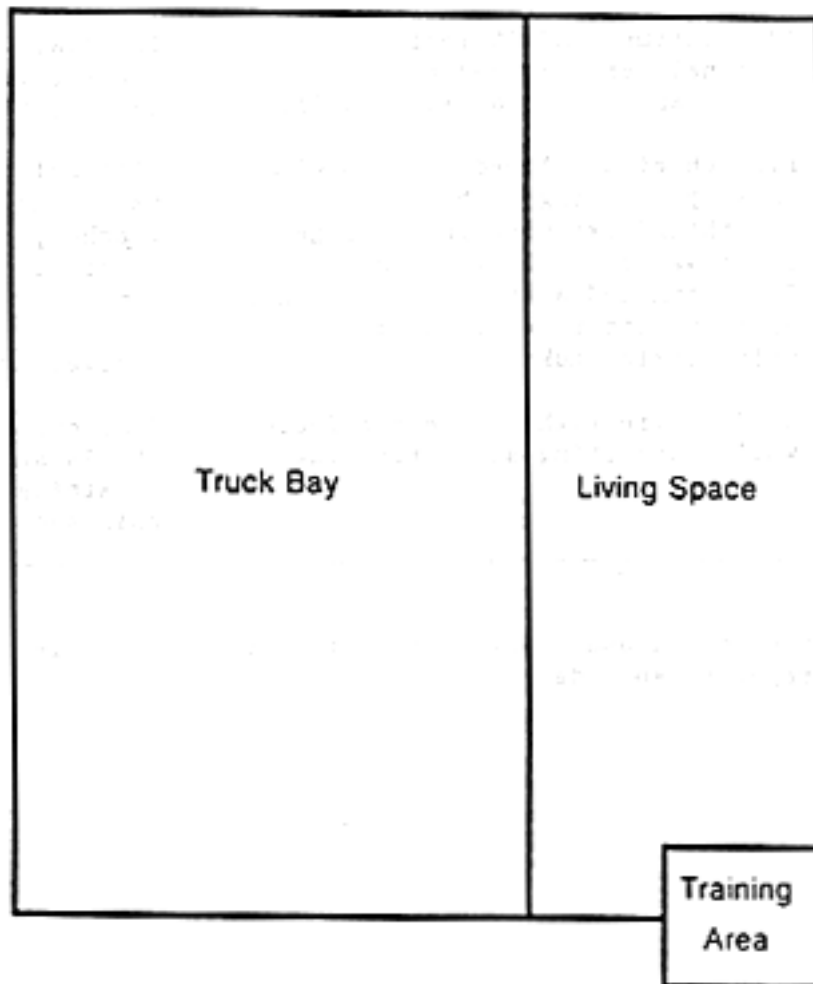
FIGURE I

# Diagram of North Riverside Fire Department Building

HETA 87 - 109



Top View



Note: Dimensions and Locations are approximate

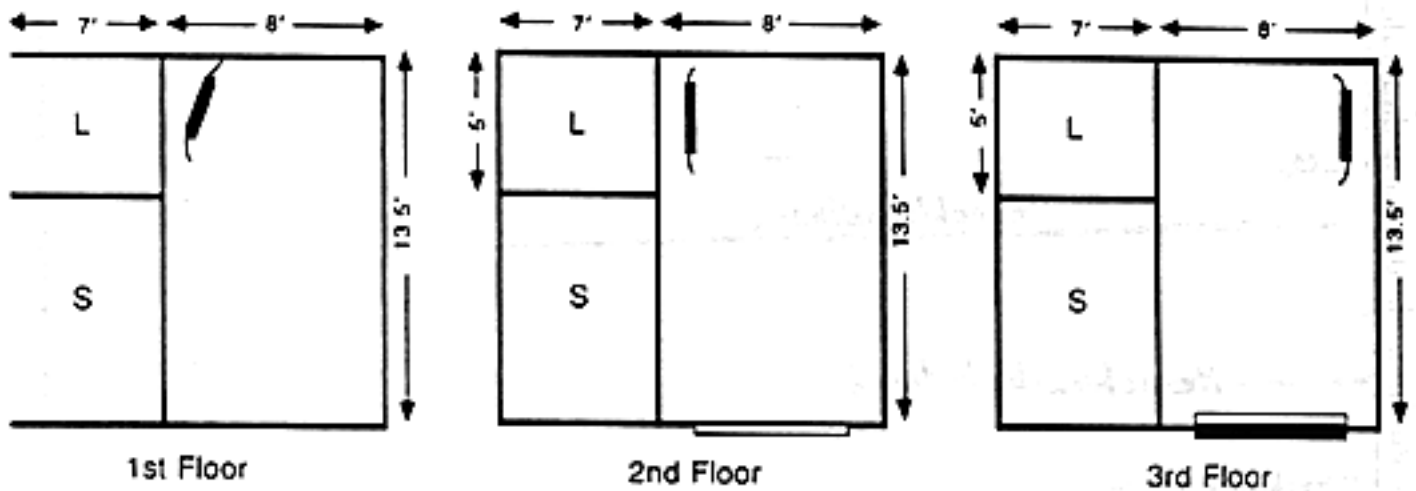
FIGURE II


## Location of 5D Smoke Bombs

During NIOSH testing in North Riverside Fire Dept - Training Facility

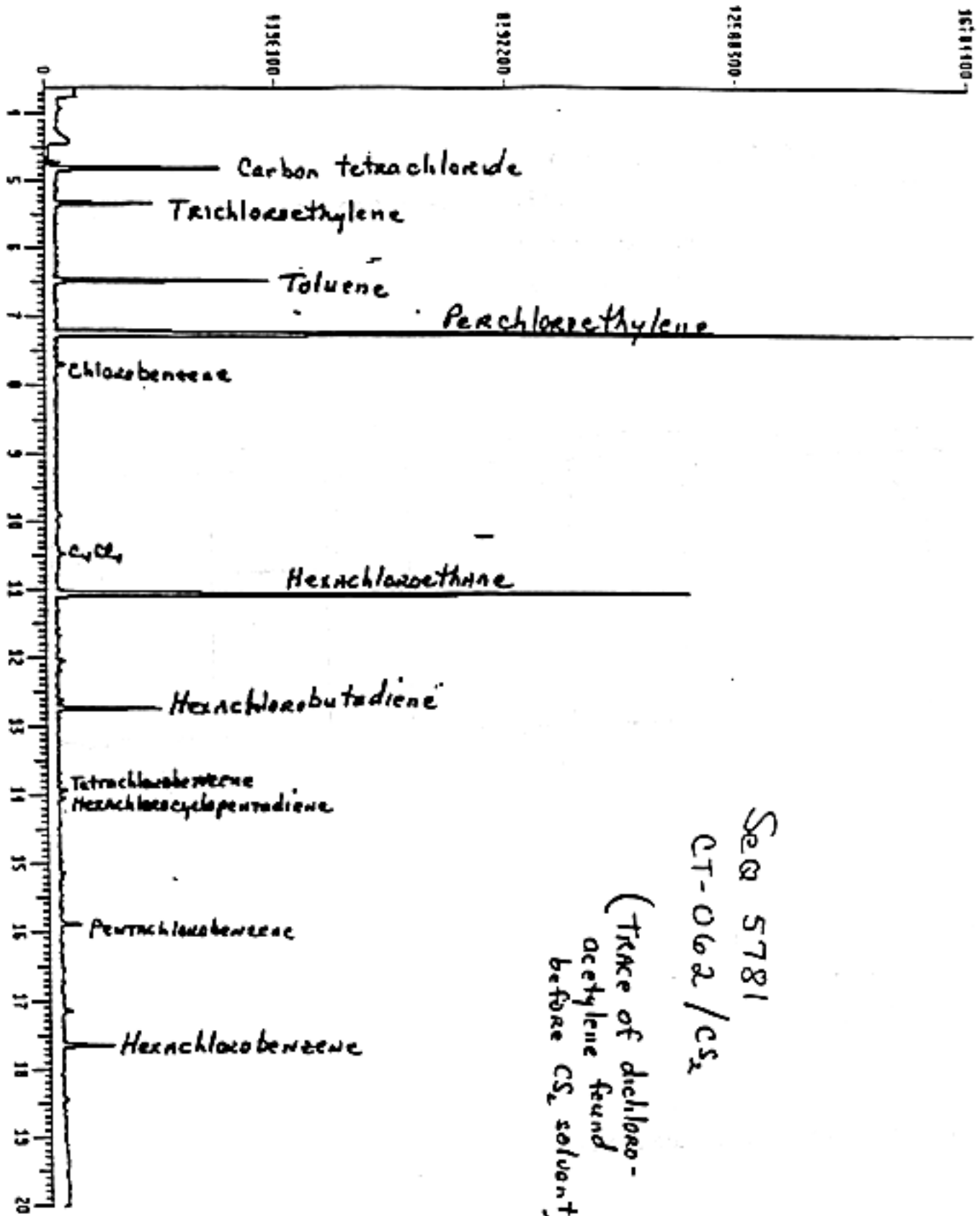
February 17, 1987

HETA 87 - 109



-  = 5D Smoke Bombs
- L = Landing
- S = Stairs

Note: Dimensions and Locations are approximate



... .. ALL THE JU SMOKE BOMB CLOUD

REPORT DOCUMENTATION PAGE	1. REPORT NO.	2.	3. Recipient's Accession No. <b>PB89 230247IAS</b>
4. Title and Subtitle Health Hazard Evaluation Report No. HETA-87-109-1950, North Riverside Fire Department, North Riverside, Illinois		5. Report Date 89/03/00	
7. Author(s) Zey, J. N., and F. Richardson		6. Performing Organization Rept. No. HETA-87-109-1950	
6. Performing Organization Name and Address Hazard Evaluations and Technical Assistance Branch, NIOSH, U.S. Department of Health and Human Services, Cincinnati, Ohio		10. Project/Task/Work Unit No.	
		11. Contract (C) or Grant (G) No. (C) (G)	
12. Sponsoring Organization Name and Address		12. Type of Report & Period Covered	
		14.	
15. Supplementary Notes			
16. Abstract (Limit: 200 words) In response to a request from the International Association of Fire Fighters, an assessment was made of the toxicity of smoke clouds produced by a zinc-chloride (7646857) (ZnCl <sub>2</sub> ) smoke generating device used in training exercises at the Fire Training Facility of the North Riverside Fire Department (SIC-9224), North Riverside, Illinois. Analysis indicated that the smoke contained hydrochloric-acid (7647010), zinc compounds and several chlorinated hydrocarbons. Evaluations were made during two separate training exercises. Hydrochloric-acid concentrations ranged from trace amounts to 44mg/m <sup>3</sup> , exceeding the OSHA recommended ceiling level criteria of 7mg/m <sup>3</sup> . Zinc-chloride concentrations ranged from 63 to 172mg/m <sup>3</sup> ; the limit was 2mg/m <sup>3</sup> . Perchloroethylene (127184) concentrations ranged up to 62mg/m <sup>3</sup> . The amount of smoke generated for the exercise significantly surpassed that recommended by the manufacturer. Five and six participants in the two exercises experienced symptoms including breathing difficulty, joint pain, fever and chills, and general fatigue. These individuals were not wearing a respirator or had removed it as part of the drill. The authors conclude that the dense clouds generated by the smoke generating devices should be considered hazardous to individuals without respiratory protection. The authors recommend the use of a self contained breathing apparatus during training exercises			
17. Document Analysis a. Descriptors			
b. Identifiers/Open-Ended Terms NIOSH-Publication, NIOSH-Author, NIOSH-Health-Hazard-Evaluation, NIOSH-Technical-Assistance-Report, HETA-87-109-1950, Region-5, Hazard-Confirmed, Firemen, Smoke-inhalation, Acid-mists, Zinc-compounds			
c. COSATI Field/Group			
18. Availability Statement		19. Security Class (This Report)	21. No. of Pages
		22. Security Class (This Page)	22. Price