

HURCO

TECHNOLOGIES, INC.

OWNERS MANUAL FOR POWER SMOKER II



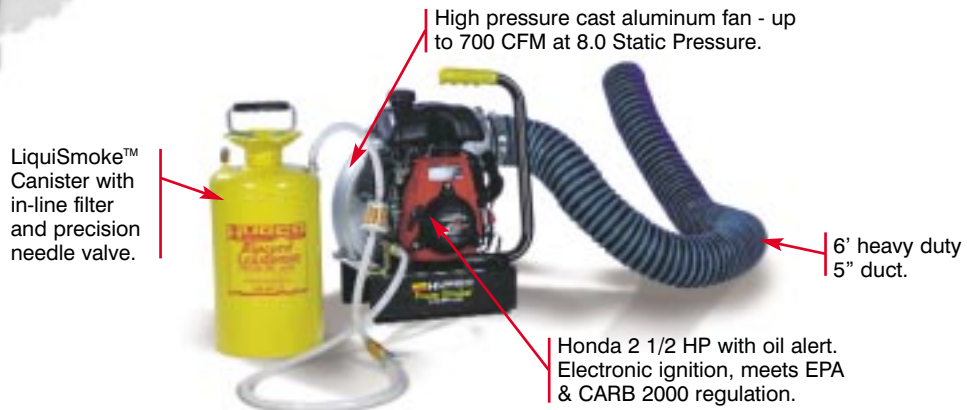
SMOKE TESTING PLUMBING SYSTEMS FOR LEAK DETECTION

OPERATING INSTRUCTIONS

- Attach damper plate to air inlet ring with the red adjustment knob provided. This enables you to restrict the cfm's as necessary for the size of the system you are testing. Unrestricted air flow from the unit will develop up to 700 cfm. Use with caution.
- Read all operating instructions in the Motor Manual provided with unit.
- Read all warnings on the Power Smoker before unit operation.
- Check engine for proper quantities of gas and oil.
- Pour (1) gallon of LiquiSmoke into the pressure container being careful to not overfill. Place pump into tank opening and rotate clockwise until tightly locked and sealed in tank opening. To pressurize the container, disengage handle 1/4 turn and then pump plunger up and down until it starts to work hard. Caution, pumping too hard can collapse the plunger!
- **WARNING: The LiquiSmoke container is now under pressure and potentially DANGEROUS. Always wear eye protection when using this container.**
- Connect the flexible duct to the outlet end of the unit and to the means of entering the system. This may be a vent pipe, clean out, trap, etc.



Power Smoker 2



Power Smoker II Parts Listing

| REF NO. | PART NO. | DESCRIPTION | NO. REQD. |
|---------|----------|---------------------------|-----------|
| A | 4300-801 | 2.5hp. Honda Motor | 1 |
| B | 4300-802 | Modified Muffler Complete | 1 |
| C | 4300-803 | Rear Fan Housing | 1 |
| D | 4300-804 | Fan | 1 |
| E | 4300-805 | Front Fan Housing | 1 |
| F | 4300-806 | Base Frame Complete | 1 |
| G | 4300-807 | Shaft Hub | 1 |
| H | 4300-808 | Damper Flange | 1 |
| I | 4300-809 | Damper Plate | 1 |
| J | 4300-810 | Outlet Screen | 1 |
| K | 4300-811 | Rubber Vibration Pad | 4 |
| L | 4300-812 | Coupler Bracket | 1 |
| M | 4300-312 | Compression Coupler | 1 |
| N | 4300-110 | Woodruff Key | 1 |
| O | 4300-813 | Copper Tubing | 1 |
| P | 4300-814 | Bolt 1.0x14 | 4 |
| Q | 4300-404 | Clamp Knob | 1 |
| R | 4300-815 | Set Screw | 3 |
| S | 4300-816 | Machine Screw | 1 |
| T | 4300-817 | Center Bolt 1/4-28x1 3/4 | 1 |
| U | 4300-818 | Housing Bolt 1/4-28x3/4 | 4 |
| V | 907 | 1/4 Flat Washer | 8 |
| W | 4200-310 | Handle Grip | 1 |
| X | 908 | Nylock Nut 1/4-20 | 4 |
| Y | 4300-819 | K Lock Nut | 1 |
| Z | 906 | Bolt 1/4-20x3/4 | 2 |

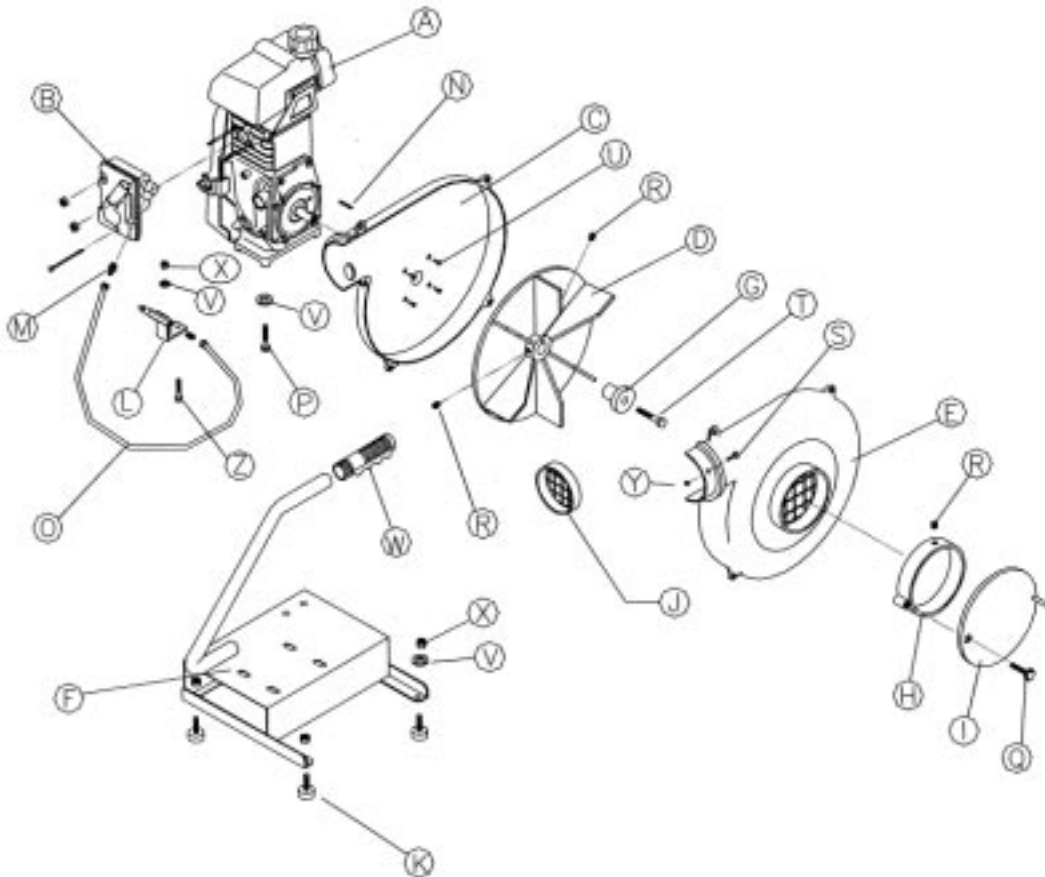
Maintenance Schedule

| Regular Service Period | | Before each use. | First use or 10 hrs. | Every 3 months or 25 hrs. | Every 6 months or 50 hrs. | Every 100 hrs. | Every 2 years or after each 300 hrs |
|---|--------------------|------------------|--|---------------------------|---------------------------|----------------|-------------------------------------|
| Perform at every indicated month or operating hour interval, whichever comes first. | | | | | | | |
| * | Engine Oil | Check | • | | | | |
| | | Change | | • | | •(3) | |
| * | Air Filter | Check | • | | | | |
| | | Clean | | | •(2) | | |
| * | Spark Plug | Clean / Adjust | | | | • | |
| | | Replace | | | | | • |
| * | Fuel Tank & Filter | Clean | | | | •(4) | |
| * | Idle Speed | Clean / Adjust | | | | • | |
| * | Valves | Clean / Adjust | | | | | • |
| * | Fuel Tube | Check | Every 2 years (Replace if Necessary) (4) | | | | |

* Emission related items.

- (1) For commercial use, log hours of operation to determine proper maintenance intervals.
- (2) Service more frequently when used in dusty areas.
- (3) Change engine oil every 25 hours when used under heavy load or in high ambient temperatures.
- (4) These items should be serviced by your servicing dealer, unless you have the proper tools and are mechanically proficient.

- Start the motor and allow it to warm up for at least one minute. The muffler heat activates the smoke.
- Connect the LiquiSmoke container hose to the quick connect on the unit base. **SLOWLY** open the calibrated needle valve to the left, (counter clockwise) allowing the liquid to flow to the chamber. **It is not necessary to open the valve all the way to the “ON” position to maintain peak performance.** Opening the needle valve too far will cause liquid blow-by reducing efficiency and economy of use.
- After filling the system with the desired amount of smoke, turn the needle valve clockwise until tight. Reduce the operating RPM running the unit at a low cfm to track smoke escaping from the system.
- Upon completion, disconnect the pressurized canister from the unit. To release pressure, lift up ring on relief valve located on top of canister. **WARNING: To avoid possible injury, never open canister without first relieving pressure.**
- **WARNING! Smoke testing can be dangerous. Do not use in areas of volatile gases. Notify the fire department and all residents of your plans before you start smoke testing.**



**Power Smoker II
Parts Schematic**

LIMITED WARRANTY

For a period of one year from the date of purchase, HURCO Technologies, Inc. will replace to the original purchasers, free of charge, any part or parts of the POWER SMOKER II unit, excluding the engine, found to be defective in material or workmanship or both; this is the exclusive remedy. All transportation charges on parts submitted for replacement under this Warranty must be borne by the purchaser. The engine is warranted as outlined by the engine manufacturers limited warranty only. THERE IS NO OTHER EXPRESS WARRANTY. IMPLIED WARRANTIES, INCLUDING THOSE OF MERCHANTABILITY AND FITNESS FOR A PARTICULAR PURPOSE, ARE LIMITED TO ONE YEAR FROM THE DATE OF PURCHASE AND TO THE EXTENT PERMITTED BY LAW. ANY AND ALL SUCH IMPLIED WARRANTIES ARE EXCLUDED. LIABILITY FOR INCIDENTAL AND CONSEQUENTIAL DAMAGES UNDER ANY AND ALL WARRANTIES ARE EXCLUDED TO THE EXTENT EXCLUSION IS PERMITTED BY LAW.

RETURN PROCEDURES

All products must be flushed of any chemical (ref. OSHA Section 0910.1200 (d)(e)(f)(g)(h)), including drained of any gas and oil prior to shipping to Hurco for service or warranty consideration.

Be prepared to give Hurco full details of the problem, including the following information:

1. Model number, serial number, the date and from whom you purchased the equipment.

Hurco may request additional information. Consult the factory to receive a return material authorization before sending the product. All products returned for warranty work should be sent shipping charges prepaid to:

HURCO TECHNOLOGIES, INC.
Attention: Service Department
409 Enterprise Street
Harrisburg, SD 57032

HURCO
TECHNOLOGIES, INC.

P.O. Box 70 | Harrisburg, SD 57032
Phone: (605)743-2466 • Fax #: (605)743-2465
E-mail: info@hurcotech.com
Website: www.hurcotech.com