



HURCO
TECHNOLOGIES, INC.®



HYDRANT AND WATER MAIN TESTING AND MAINTENANCE

TESTING, MAINTENANCE, DATA
COLLECTION AND MAPPING

HURCOTECH.com





TECHNOLOGY TO HELP EVALUATE WATER DISTRIBUTION SYSTEMS

Easily Test The Dependability Of Your Hydrant And Water Systems

Our Fire Flow Pro is capable of handling everything from showing you the exact amount of water used in a simple hydrant-flushing program, to collecting data to build complex hydraulic models.

Fire Flow Testing

Insure a safe and adequate flow for fighting fires and help lower ISO insurance score.



C-factor Testing

Determine the flow characteristics of old or relined pipes.



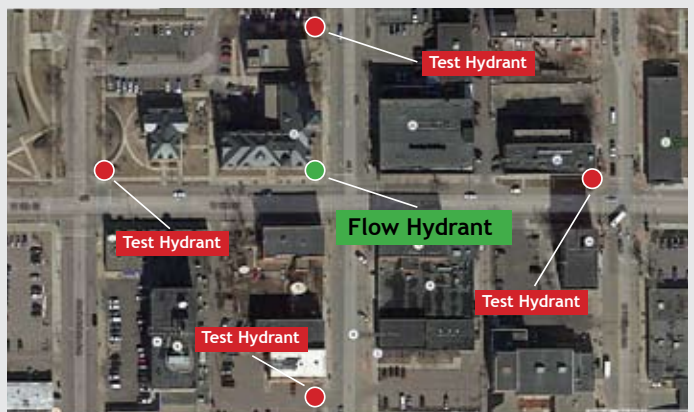
Unidirectional Flushing

The most efficient way to flush mains. Better cleaning, less water used and reduced need for boil orders



Hydraulic Modeling

Gather pressure data from multiple hydrants simultaneously to help build hydraulic models.



How It Works

Utilizing the most state of the art equipment available, Fire Flow Pro delivers unmatched accuracy for testing the dependability of your water distribution system. Simply attach your gauge cap to the test hydrant, and connect your fire hose with the Hose Monster water diffuser and built in pitotless nozzle to the flow hydrant. The Wika pressure transducers connect to the gauge cap on the test hydrant end and to the pitotless nozzle on the flow hydrant end, allowing for simultaneous pressure recording. The transducers, routed through powerful 900 MHz wireless transmitters, speed the data to your handheld computer. Powered by Hurco's Infrastructure Management Software (IMS), the system provides real-time results and generates reports on the fly. It also captures GPS location and critical data on hydrants, valves, and mains as the flow test is in progress, allowing for informed decision making in a data rich environment. Once

testing is completed for the day, the data is synced to your office computer where detailed reports and charts are automatically generated. Sync a new work order to the handheld computer, and your crew has everything they need to start another day of testing, covering everything from their walking order to repair work.



Setup is as easy as 1-2-3

If you can open a fire hydrant, you are already an expert!

1 - Make Connections to Fire Hydrant

2 - Flow Water

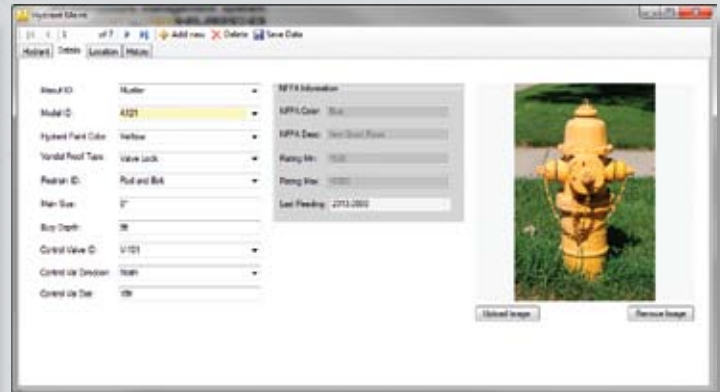
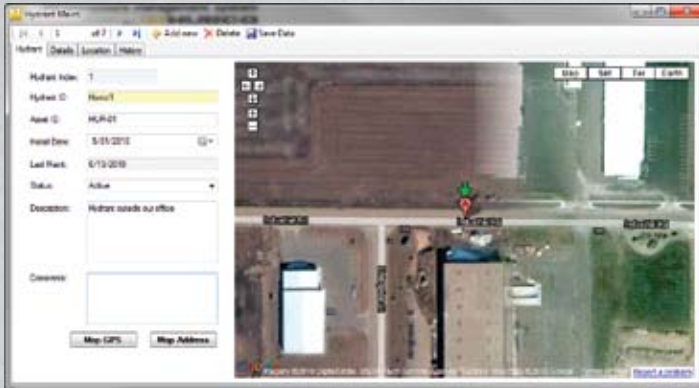
3 - Capture Data



DATA COLLECTION AND MAPPING

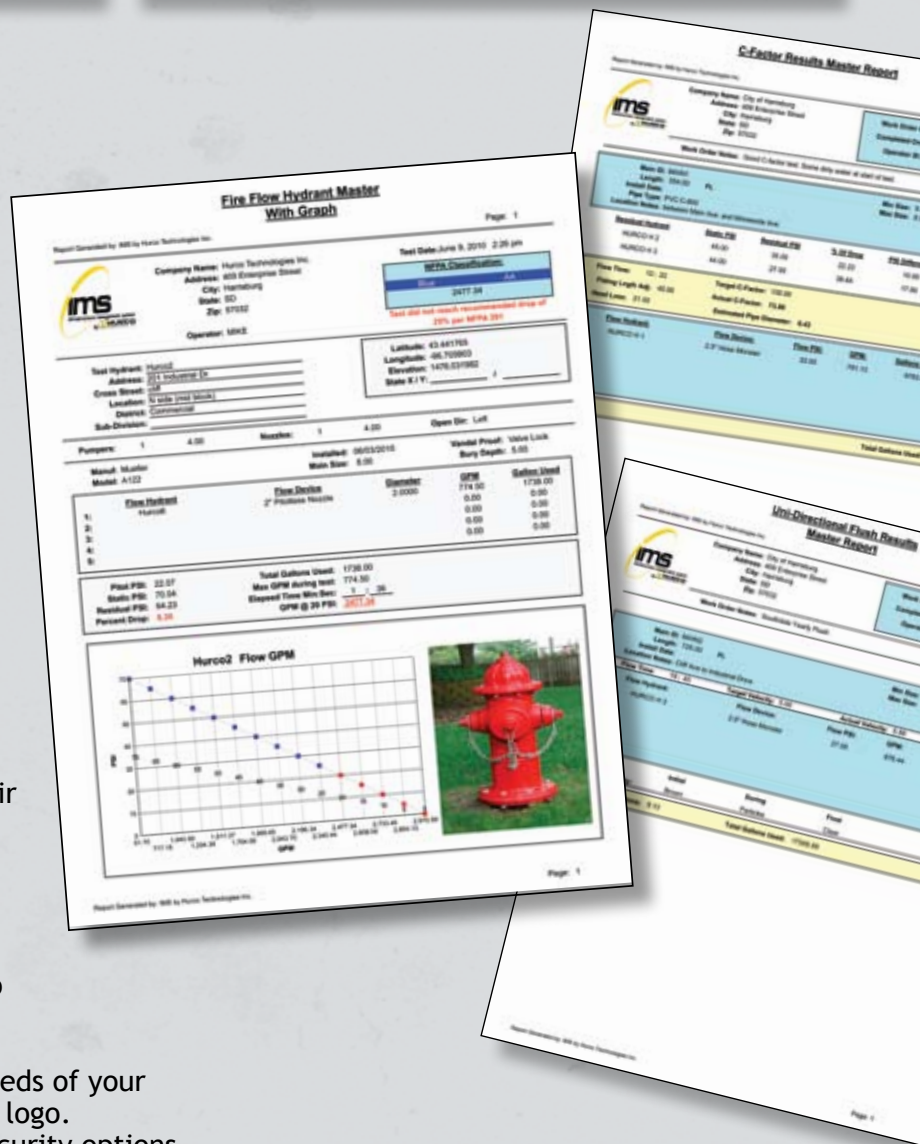


Fire Flow Pro is powered by our IMS software, making the system suitable for towns or municipalities of any size.



Capabilities

- **Valve And Hydrant Inventory**
 - Includes asset image, location, condition, manufacturer, maintenance history, and more.
 - Customizable dropdowns can be modified to include only the information on valves and hydrants specific to your community.
- **Create Work Orders**
 - Create by single asset, multiple asset, and walking order
 - Schedule repeat work orders - create it once, and set it for years to come.
- **Record Testing Activities**
 - Testing activities include hydrant flushing, fire flow testing, unidirectional flushing, c-factor testing, and hydraulic modeling.
 - Capture GPS (if GPS is already stored, locate assets by GPS)
 - Record testing activities with a push of a button. The software performs all calculations for you.
 - Note deficiencies and add images for repair work orders.
- **Create Detailed Reports**
 - Comprehensive reports including dynamically generated graphs.
 - Ability to export to csv, add your own custom Crystal Reports, and integrate into existing SQL Server.
- **Administrative Functions**
 - Customize the program for the specific needs of your city, right down to incorporating your city logo.
 - Add numerous users, each with custom security options.





Fire Flow Pro Kit Includes

- Transmitters with Cradles (2)
- Pressure Transducer Sensors (2)
- IMS Software for Office and Mobile Computers
- Trimble Yuma Computer
- Hose Monster with Pitotless Nozzle
- 10' Fire Hose
- Test Hydrant Gauge Cap
- Pelican Carrying Case

Setup can be used with your existing computer or diffuser. Contact Hurco for requirements.

Features:

- **Eliminates Guess Work**
 - Shows the precise amount of water being used in real time.
 - See exactly when you have achieved the desired test results - Save thousands of gallons of precious and expensive water by not having to guess when your test is complete.
 - See results instantaneously at your field computer.
- **Streamline Testing Activities**
 - Test multiple hydrants at once.
 - Simultaneously and instantly capture data from multiple transmitters.
 - Repeater capability for bouncing one signal to another to increase range, transmit around obstacles, and for capturing pressure data from multiple hydrants.
 - Work orders with GPS locations eliminate guesswork of testing the correct hydrants in the quickest order.
- **Utilizes Only The Most Accurate And Reliable Products**
 - Transmitters utilize 900 MHz wireless RF signal, which provides longer range and is more reliable than Bluetooth.
 - Hose Monster's water diffuser with pitotless nozzle provides the most accurate flow measurements, and you'll never have to worry about down time caused by replacing broken pitot tubes.
 - Durable Trimble Yuma has a sunlight readable display, can survive being dropped in the field, and is water resistant. (See Trimble specifications)
 - Wika thin membrane pressure transducers accurate to 0.001 psi providing unmatched accuracy.
 - Integrates with Spatial Wave Mapping Software for those needing a GIS solution.

For more detailed information and video demonstrations, visit our website at: www.HURCOTECH.com



INNOVATIVE PRODUCTS

ADVANCED ENGINEERING

PATENTED TECHNOLOGY

SINCE 1979

Proudly Manufactured in
The United States of America
in Harrisburg, South Dakota



HURCOtech.com

1-800-888-1436

Fire Flow Pro is covered by several United States Patents
and other Patents Pending.